

This newsletter and an archive are available on the web at www.finaid.umich.edu/Publications

- 2 Holiday office hours
- 3 Receiving your aid for Winter 16
- 4 How wait-listed classes affect aid
- 5 Applying for 2016-2017 aid
- 6 Account holds affect aid

CENTRAL CAMPUS:
2500 Student Activities Bldg.

NORTH CAMPUS:
B430 Pierpont Commons

PHONE: (734) 763-6600

EMAIL: financial.aid@umich.edu

WEBSITE: www.finaid.umich.edu



NEWSLETTER

Student bills due Jan. 6: Pending aid represents estimate of expected aid

Winter Term student billing for tuition, fees, and on-campus room/board are issued in mid-December and will be due on Jan. 6, 2016.

Because bills are issued before financial aid is credited to your account, a special category called Pending Aid **A** displays at the bottom of the bill to represent financial aid not yet posted. Pending Aid

is the amount of financial aid U-M expects to credit to your account based on your Award Notice.

The Amount Due **B** is the sum of charges on your student account. Subtract Pending Aid from your Amount Due to determine what you owe for Winter Term.

If you have enrolled full-time (without wait-listed classes) and signed the required documents (such as your loan documents) by Dec. 4, 2015, any awarded financial aid will be subtracted from the Amount Due at disbursement and will

appear as detail in the “Credits, Payments and Financial Aid” section.

To access your student bill online:

- Visit Wolverine Access (<https://wolverineaccess.umich.edu/>), and select the Student tab and “Student Business”.
- Log on using U-M uniusername and kerberos password.
- Select Student Center tab.
- Select “Account Inquiry” under the Finances section.
- Select the Invoice/eBill to be viewed, denoted by date.

UNIVERSITY OF MICHIGAN STUDENT FINANCIAL SERVICES – STATEMENT OF ACCOUNT Page: 1

Please make payment online by Payment Due Date at: <https://wolverineaccess.umich.edu>
Online Payment to U-M's preferred payment method. Online Payments are posted to the student account in real-time.

Samuel Student
 UMID: 00000000 Invoice Date: 08/09/2016
 Amount Due: NONE *
 Payment Due Date: 08/31/2016

As of today, 8/9/2016, your unpaid charges due on or before 8/31/2016 are:

Charges Due	Due Date	Charge	Term	Due Amount	Running Total
AMOUNT DUE					NONE

Pay Now

Student Account Activity as of Invoice Date 8/9/2016.
Transactions after this date will be included on your next invoice.

Charges and Adjustments	Find	View All	First	1-6 of 6	Last
Item Description	Term	Date Posted	Amount		
ITD COMPUTING CHARGES	FA 2016	08/09/2016	2.04		
MICHIGAN STUDENT ASSEMBLY	FA 2016	08/09/2016	7.19		
REGISTRATION FEE	FA 2016	08/09/2016	80.00		
SCHOOL & COLLEGE GOV'T FEE	FA 2016	08/09/2016	1.50		
STUDENT LEGAL SERVICES	FA 2016	08/09/2016	6.00		
TUITION-UGRD-EDUC-UP-RES	FA 2016	08/09/2016	6,577.00		

Credits, Payments and Financial Aid

You have no transactions this period.

Pending Aid **A**

*Pending Aid may be subtracted from the Amount Due shown above unless you are enrolled in the U-M Payment Plan. See the [Student Financial Services](#) web site for more information about Pending Aid.

Item Description	Term	Amount
* MICHIGAN GRANT	FA 2016	-4,914.00
* M-PRAC SCHOLARSHIP	FA 2016	-250.00
* FED PELL GRANT	FA 2016	-1,500.00
* FED PERKINS LOAN	FA 2016	-250.00
* FED SUBSIDIZED DIRECT LOAN	FA 2016	-3,522.00
* FED UNSUB DIRECT LOAN	FA 2016	-210.00

IMPORTANT EXCEPTIONS:

Some sources of aid, such as third-party credits and private scholarships for which funds have not yet been received, will not appear as pending aid. (They will appear on your student account when funds are received and applied.) If they have not appeared by the date due, pay the Amount Due to avoid receiving a late fee.

Verify bank account to ensure Winter Term financial aid

Be sure to verify the bank account information attached to your Direct Deposit account with U-M. If your bank account has changed or the number is incorrect, your financial aid refund cannot be disbursed and your aid will be delayed.

Log into Wolverine Access (<https://wolverineaccess.umich.edu>) and visit the Payroll & Compensation > Direct Deposit page to verify your bank information and make any changes.

The Customer Service staff at the U-M Shared Services Center handles inquiries about Direct Deposit. If you have questions, call (734) 615-2000 (select Option 2) or email payroll@umich.edu (include your 8-digit UMID number). Online, visit www.finance.umich.edu/finops/payroll/contact/customerservice for additional help.



Spring-Summer aid materials available Feb. 1

Unless you are studying abroad, students planning to attend Spring or Summer 8-week terms or the 16-week combined Spring-Summer Term at U-M will use the 2016 Request for Funds form to apply for aid. This form collects information (such as enrollment data) which is not on the FAFSA.

Forms and instructions will be available on our website (www.finaid.umich.edu) on or before Feb 1.

Aid funds for Spring and Summer terms are limited. Be sure to apply by priority

deadline to be considered for aid. Visit www.finaid.umich.edu/CurrentStudent in early 2016 for details and deadlines. You must register for classes in order to receive financial aid from U-M.

Students studying abroad will complete a Spring/Summer Study Abroad Financial Aid Request form, available in PDF format. Visit the forms page at www.finaid.umich.edu on Feb. 1 to find this form. *(These students will NOT complete a Request for Funds form.)* Contact Mike Ross at 734-763-6600 if you have questions.

ENROLLMENT REMINDER

Enrolling in courses is not enough to secure your financial aid. **You must also attend the courses in which you enroll.** The Office of Financial Aid is required to verify that students who receive a non-passing grade (any grade other than A, B, C, D, I or P) in any class actually began attending the class. For example, if you receive an E or an NR in a course, we will follow up to determine whether or not you attended the class.

Failure to attend can be expensive. Your aid could be reduced retroactively and you could be required to repay aid you have received. If you have any questions about your enrollment and eligibility for financial aid, please contact or visit the Office of Financial Aid for assistance.

How many times can you repeat a course and still receive financial aid?

There is no limit for students who receive failing grades in a course: You may continue to take the course until you pass it. (So, no limit on the number of times a course is repeated when receiving E, F or W grades.)

If you receives a grade of D- or higher, you may take the class one more time and remain eligible for aid. But if you enroll for it a third time, there will be no aid. (So, you may take a course twice if receiving a grade of D- or higher and still receive aid. Or, you may take a course and fail it, take it again and pass it and take it yet again and still receive aid.)

Holiday office hours & services

Some University of Michigan offices have special hours and/or limited services before the holiday break. We encourage you to resolve any situations and/or receive answers to your questions with regard to student services and financial aid (including emergency aid funds) by **Friday, Dec. 4, 2015**. If you are not sure whether a particular office will be open or able to serve your needs before the holiday break, it is best to call first.

The Office of Financial Aid will be **CLOSED**:

Dec. 16 @ 1 p.m.

Dec. 25

through the Winter Break

The office will be open @ 8 a.m. on Jan. 4.



Did You Know?

- If you are graduating in December and you borrowed through the Federal Direct Loan (Unsubsidized and/or Subsidized) program, you are required to complete Direct Loan Exit Counseling online at <https://StudentLoans.gov>. The counseling session provides essential information about loan repayment.
- Moving off-campus does not affect your aid unless you are living with your parents.
- Enrolled at more than one college? You may receive aid from only one institution.
- Some scholarships require full-time enrollment.
- Students must report additional scholarships, departmental awards, or other items not listed on award notices. These may affect your aid. Visit Wolverine Access or call us.



Receiving your financial aid for Winter Term 2016

WHEN:

First Winter Term Disbursement will be deposited in bank accounts (for those with direct deposit) on or before:

THURSDAY, DECEMBER 31, 2015

(For those without Direct Deposit, checks will be mailed on this date.)

HOW:

Financial aid funds are directly applied toward the current term tuition, fees, and residence hall charges appearing on your student account; any excess funds will be refunded to you in one of two ways:

1 Deposited in your bank account if you have direct deposit. To sign up, select Direct Deposit from the Wolverine Access Student Business menu (<https://wolverineaccess.umich.edu>). This is the University's preferred method of payment. Be sure your bank account information on file is correct.

OR

2 By check mailed to your current (local) address listed on Wolverine Access. If no current/local address is listed, the check will go to your permanent address. Be sure your address is updated on Wolverine Access by Dec. 18, 2015. You will not receive your funds as quickly with this payment method.

TWO IMPORTANT NOTES:

- At the time of disbursement, if you are enrolled less than full-time but at least half-time, all of your financial aid funds (except Direct Loans) will be prorated and reduced based on your level of enrollment (you will receive aid awards proportional to the number of hours you take).
- If you have ever made a cash payment to your account, any refund you are owed will not automatically be sent to you. Instead, a credit will appear on your account. You can have the refund released to you by contacting Student Financial Services.

Steps to receiving your Winter aid:

Be sure you are registered at least half-time (6 hours for undergraduates and 4 hours for graduate students) by 5 p.m. on Dec. 22, 2015, in order to have expected aid funds directly deposited on December 31, 2015. *Note: Your aid will be prorated if you are not enrolled full-time (see Two Important Notes, page 3). Wait-listed courses do not count when determining your enrollment level (see information at right).*

After Jan. 6, students who register by 5 p.m. on Wednesday of any given week should receive their refunds the Monday following their registration.

If you are receiving aid for the first time this academic year, see the requirements listed below.

Put your name on your mailbox! The Post Office will not deliver first-class mail to mailboxes without names listed on them in apartment buildings, student rooming houses, etc. Be sure your name is on your mailbox before Dec. 18, 2015.

Borrowers must complete Entrance Counseling to receive loans

First-time borrowers accepting Federal Direct Loans in their financial aid packages must complete Entrance Counseling when they borrow their first loan at U-M. Visit <https://StudentLoans.gov>, sign in and follow the "Entrance Counseling" links. Our office is notified when this is completed and student loans can be disbursed and paid.

This interactive counseling session helps students develop budgets and understand their loan responsibilities. A U.S. Dept. of Education brochure on the topic can be <https://studentaid.ed.gov/sa/es/sites/default/files/loan-exit-counseling.pdf>.

IS WINTER TERM THE FIRST TIME YOU ARE RECEIVING AID THIS ACADEMIC YEAR? BE SURE THAT YOU HAVE:

- Received a 2015-2016 financial aid Award Notice.
- Provided all other documents requested by the Office of Financial Aid.
- Completed Entrance Counseling at <https://StudentLoans.gov> for your Direct Loan(s) if you are an entering undergraduate or graduate student.
- Completed a Direct Loan Master Promissory Note (at <https://StudentLoans.gov>), if you were awarded Direct Loan funds. *Note: If you have completed a Master Promissory Note at U-M and received a loan within the last 12 months, do not complete another.*
- Completed a Perkins, Health Professions, and/or Nursing Student Loan Master Promissory Note and a rights and responsibilities statement if you were awarded any of these loan funds (see Wolverine Access: Students > Student Business > Financial Aid > Aid Year 2016 > Loans).
- Resolved any academic holds. Aid cannot be paid until the holds are lifted.



Tips for Winter Term

University Drop/Add date will affect your financial aid

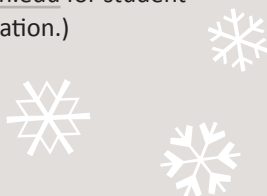
– We assume full-time enrollment when calculating financial aid, so a student's financial aid budget reflects this. You may enroll at less than full-time, but you must be enrolled at least half-time in for-credit degree classes to be eligible for any financial aid (minimum 6 hours for undergraduates and 4 hours for graduates). Non-credit classes are not eligible for financial aid.

Remember to enroll in a course by the University's Drop/Add date each term to be considered for financial aid for that course. If your program has a flexible enrollment policy, be sure to register before the Drop/Add deadline or you cannot receive aid. For more, visit our Terms and Conditions of Your Aid page (www.finaid.umich.edu/Terms).

Know if you owe – Some student account charges, including orientation or lost ID fees and phone bills, cannot be paid with financial aid (Because of this, you may receive a financial aid disbursement (a check or direct deposit to your bank account) even if you still owe money on your student account. You are responsible for paying for those charges.

Different offices and functions

– Although we are neighbors in the Student Activities Building, the Office of Financial Aid and Student Financial Services are different departments and have very different functions. OFA administers and awards financial aid (grants, loans, Work-Study, and scholarships), while SFS administers your student account. (Visit SFS at <http://sfo.umich.edu> for student account information.)



WINTER ENROLLMENT:

How do wait-listed classes affect your financial aid?

When you register for classes, remember that credit hours for wait-listed courses (marked with an orange triangle on your class schedule, as shown below) are not included in your credit hour total until you are actually admitted to the class. So while you may intend to enroll full-time, your course load may be considered part-time while you wait to be admitted to Wait-listed class.

My Winter 2016 Class Schedule						
		✓ Enrolled	⚠ Wait-Listed			
Class	Description	Days/Times	Room	Instructor	Units	Status
AMCULT 205-003 (40181)	Amer Cultures (Lecture)	TuTh 2:00PM - 3:00PM AUD D AH	AUD D AH	Staff		⚠
AMCULT 205-004 (40183)	Amer Cultures (Discussion)	Th 5:00PM - 6:00PM 2347 MH	2347 MH	Staff	3.00	⚠
ECON 102-100 (13289)	Principle Econ II (Lecture)	TuTh 11:30AM - 1:00PM 140 LORCH	140 LORCH	Staff		✓
ECON 102-104 (13295)	Principle Econ II (Discussion)	Fr 1:00PM - 2:30PM 315 DENN	315 DENN	Staff	4.00	✓
MATH 105-005 (14747)	Mat.Fons.Gph (Lecture)	TuWeFr 8:30AM - 10:00AM 553 DENN	553 DENN	Staff	4.00	✓

The 3 credits for this wait-listed class will not count in the student's credit hour total. The student is registered for 8 hours – more than half-time but less than full-time.

How does this affect your financial aid?

Your financial aid award is based on full-time enrollment, and you must be enrolled at least half-time (6 hours for undergraduates, 4 hours for graduate students) to receive any aid. If you are enrolled at least half-time but less than full-time, all of your financial aid (except Direct Loans) will be prorated and reduced to reflect the number of credit hours you are taking.

What to expect if you have a Wait-listed class:

- If you are already enrolled for 12 or more hours and have an additional wait-listed class, your aid will be fully disbursed because you are considered full-time.
- When bills for winter term are issued in December, the amount of financial aid that appears on your bill as pending aid will be based on the number of credit hours you are taking, minus the wait-listed class. In addition, the wait-listed class will not appear on this bill.
- When financial aid is disbursed to your student account, the aid you receive will be prorated based on the number of credit hours you are taking. If you have scholarship(s) that require full-time enrollment before disbursement, you will not receive those funds until you are enrolled full-time.
- Once you are admitted to the wait-listed class, your enrollment level will be adjusted and the balance of your aid will be disbursed to you. You will be billed for the class.

What you can do:

- Carefully track your enrollment level if you are on a waiting list.
- If you have not been admitted to your wait-listed class and have not received all aid funds by the time winter term bill is due (Jan. 7), pay your bill to avoid a late fee.
- Once you are admitted to the wait-listed class and/or your enrollment level is full-time, remaining aid funds will be credited to your student account. If you have paid your bill and want a check for the credited amount, request a credit release from Student Financial Services.



CONTINUING U-M STUDENTS:

How to apply for 2016-2017 Fall/Winter aid

- 1. January 2016:** The Office of Financial Aid will send you an email directing you to links with 2016-2017 application forms and deadline dates.
- 2. Jan. 1 - April 30, 2016:** Complete the Free Application for Federal Student Aid (FAFSA) at www.fafsa.gov to be considered for all aid programs. If your student and parent annual income tax returns have been filed, you may transfer IRS data directly to the FAFSA using the IRS Data Retrieval Tool.
Caution: Use income estimates if taxes are not complete. Allow plenty of processing time to meet the priority aid deadline of April 30.
- 3. Parent Information and Signatures:** Dependent students and those applying for the Health Professions Loan must provide their parents' income information, birth dates, Social Security numbers, and one parent signature on the FAFSA. Failing to provide information or signatures will result in a rejected FAFSA, which can jeopardize your priority for aid.
- 4. Once You Submit Your FAFSA:**
 - a. If you provide an email address on your FAFSA, the Department of Education will send your Student Aid Report (SAR) by email.
 - b. We will send you an email if additional application documents are required to process your aid (you can also check Wolverine Access: Student Business > Financial Aid > Aid Year 2016 > Documents/Review). If additional documents are requested, we must **receive** them by June 1.
 - c. Our office will send you an email when your financial aid Award Notice is available on Wolverine Access.
- 5. Complete or update your scholarship profile:**

See the My Scholarship Profile link at: www.finaid.umich.edu/ScholarshipsandGrants

Note: Continuing students are not required to complete a new CSS/Financial Aid PROFILE application.

FAFSA available earlier for 2017-2018 academic year

A presidential executive action in September will allow earlier year tax information on the Free Application for Federal Student Aid, effective with the 2017-18 year.

The change will make the FAFSA available in October 2016 for students applying for aid for Fall Term 2017. This allows students and families to use 2015 tax return information for their application instead of waiting to use information from 2016. Previously, the FAFSA was not made available until the January 1 prior to Fall Term and families had to estimate income or wait until filing tax returns to complete the FAFSA.

The change will increase the FAFSA's accuracy and give families an earlier and more accurate idea of their anticipated financial aid and college costs. Office of Financial Aid staff will advise students and families as quickly as possible the impact on aid deadlines and award notifications.

For students applying for 2016-17 financial aid, the current system remains in place, with the FAFSA available on Jan. 1, 2016.

More information online:

- Visit the Federal Student Aid website (<https://studentaid.ed.gov/sa/about/announcements/fafsa-changes>)
- Download a FAFSA Changes Fact Sheet for 2017-18 (<https://studentaid.ed.gov/sa/sites/default/files/fafsa-changes-17-18.pdf>)

Consider options before dropping

When and how many classes you drop will affect your financial aid.

Complete Withdrawal:

If you withdraw completely from Winter Term 2016 before March 17, your aid will be prorated based on the length of time you were enrolled. If you need to repay any financial aid funds that you received, your student account will be charged. For more information on withdrawal, see www.finaid.umich.edu/Home/ReceivingYourAid/Withdraw.

Attend Less than Full-Time:

You must attend at least half-time (6 hours for undergraduates, 4 hours for graduate students) to receive most types of financial aid. If you are attending at least half-time, but less than full-time (6 to 11 hours for undergraduates, 4 to 7 hours for graduate students), you might not be eligible for the amount of financial aid you were originally offered. If you do not enroll full-time or you drop to less than full-time before Jan. 26, the Office of Financial Aid will adjust your cost of attendance and your financial aid. If you drop to less than full-time on or after Jan. 26 AND there is no adjustment to your tuition charges, your need-based financial aid will not be adjusted. However, if you have a merit-based scholarship or award that requires full-time enrollment, you should check with the scholarship provider to determine whether dropping below full-time status will affect your scholarship.





Information for Work-Study students from the U-M Student Employment Office

File a new W-4

Students who claimed themselves exempt from payroll taxes on their 2015 Work-Study wages must file new W-4 forms in January to continue this exemption for 2016. Otherwise taxes will be deducted from paychecks beginning in February 2016. Contact the U-M Payroll Office at (734) 615-2000.

Online hiring application

To be employed at U-M or to work for a university-approved, off-campus employer, U-M Ann Arbor students must complete an online Student Employment Application on Wolverine Access. Under the student business page, select Student Employment Application. To learn more, visit the U-M Human Resources website at www.hr.umich.edu.

Winter earnings can begin Jan. 6

The first day to earn Winter 2016 Work-Study is Jan. 6, 2016. For more information about Work-Study and search for jobs, visit the U-M Student Employment website at <https://studentemployment.umich.edu>.

Cash those checks ASAP, or apply for direct deposit

Federal regulations require universities to return the federal portion of Work-Study earnings if paper checks are not cashed in a timely manner. Work-Study payroll checks expire 180 days after they are issued, so cash your check as quickly as possible to avoid having to request a replacement. The university prefers that students use direct deposit to avoid this problem and to make paying you more efficient. For more information or assistance with direct deposit, visit the Student Financial Services Office at www.finance.umich.edu/finops/student.

Student account balance will put holds on registering, receiving financial aid

Students with an unpaid balance on their University student account may have a financial hold (service indicator) placed on the account that will prohibit you from registering for classes or receiving aid.

There are options available to assist you, depending upon your situation:

- If you never received a financial aid Award Notice but applied for aid, log into Wolverine Access (<https://wolverineaccess.umich.edu>) to see what documents might be needed to complete your application and receive aid. If you have not yet applied for aid, visit <https://fafsa.gov>.
- Other loan funds may be available, either through additional eligibility for federal Direct Loans, or separate application for GRAD Plus, Parent PLUS or a private loan.

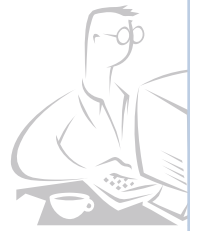
- If you declined any other loans, such as Perkins or Health Professions/Nursing, contact your financial aid office to see if those funds are available.

- Visit the U-M Student Employment website (<https://studentemployment.umich.edu>) to look for student jobs and earn wages to help you pay your bill.

If you have questions about your hold status, or one related to a Payment Plan, contact Student Financial Services at 734-764-7447 (www.sfo.umich.edu). Questions about your financial aid should be directed to the proper office:

- ▶ *Law School students should contact their financial aid office (lawfinaid@umich.edu)*
- ▶ *General aid inquires may be made to the Office of Financial Aid (financial.aid@umich.edu)*

DO YOUR PARENTS NEED A FRIEND ACCOUNT?



A student may authorize up to four persons to view the student bill and financial aid information. Under student business, visit the Student Center and select Parent/Family Authorization. Students can also sign up their Friends & Family to receive this Office of Financial Aid newsletter.

Parents/family with this access may view student information in this way:

- ▶ Visit Wolverine Access (<https://wolverineaccess.umich.edu/>)
- ▶ Under the “Parents & Family” tab, select “My Student’s Information”
- ▶ Login using Friend account or U-M username.
- ▶ Choose student from “Select a Student” drop-down box. (*Note: If parent/family member has access to more than one account, each student will be listed.*)
- ▶ Click the invoice number for the invoice to be viewed/printed.

Did You Know?

- Classes that do not count toward your degree are not eligible for financial aid.
- Bring your 8-digit UMID number when visiting our office. Parents must also provide their student’s UMID number for us to provide information about an individual student.
- For more answers to Frequently Asked Questions, visit www.finaid.umich.edu/FAQ.